



# AMERICAN BEAUTY

TRADITIONAL EAST COAST STYLE MIGRATES WEST TO TRANSFORM A LA JOLLA HOUSE FROM ITS WHITE CLAPBOARD SIDING DOWN TO ITS ANTIQUES-FILLED ROOMS.

WRITTEN BY LINDA HAYES PHOTOGRAPHY BY KARYN MILLET

INTERIOR DESIGN Warren Sheets, Warren Sheets Design, Inc. | ARCHITECTURE William Hayer, Hayer Architecture, Inc.  
HOME BUILDER Ryan Hill, Hill Construction Company | BEDROOMS 3 | BATHROOMS 4 | SQUARE FEET 5,425

When a longtime client of designer Warren Sheets bought a house in La Jolla in need of serious attention, the duo decided to take a new direction. “The owner and I had done two other homes in La Jolla and several others throughout the West,” Sheets says of previous residences designed with a grand European sensibility. “We wanted to de-Californianize this 1940s-era stucco home and infuse it with a classic Martha’s Vineyard style, yet the only way to do this was to strip it down to the studs.”

Enter architect William Hayer, with whom Sheets had also teamed in the past. “We evaluated the existing spaces and developed a plan to rearrange them according to the client’s needs and desires, and to make them more functional,” notes Hayer. Major changes to the residence included the creation of an elaborate entry courtyard and pool, the development of a large second-level master suite and sitting area, and the addition of an open-air veranda.

Materials and details—including white horizontal clapboard siding, tapered wood columns, red brick wainscoting and shutters—established a traditional East Coast tone from the start. “We salvaged 100-year-old bricks from a turn-of-the-century factory in Northern California and then reused them to bring character and history to the home,” says Sheets, who brought the same sense of character inside. “We paid painstaking attention to historical accuracy with basket-weave tile flooring and glossy white-painted wood ceilings accented with extensive millwork trim.”

The predominantly blue-and-white color scheme was selected by the owner, who has a passion for china in the same palette, and it proved a perfect complement to the home’s coastal location. “It provided the anchor for the design and helped frame other bright colors that were ultimately used,” says Sheets. Red, for instance, was introduced into the loggia, which was designed to reflect the history and heritage of America. A handmade American flag quilt Sheets discovered in an antiques shop in Los Angeles, aptly called East Meets West Antiques, underscores the theme.



The home’s living room features a coordinated combination of patterns and colors. Designer Warren Sheets chose fabric by Brunswick & Fils for the draperies and covered armchairs from Rose Tarlow Melrose House with a textile by Schumacher. The wood-frame armchairs are from Baker.



Above: In the loggia, a stripe from Ralph Lauren Home covers two armchairs, and a sofa is upholstered with fabric from Pindler & Pindler. A mounted wheel from West World Imports lends character. Right: A planter from the Warren Sheets Accessories Collection pairs with a playful dog figurine on the living room mantel.

CONTINUED FROM PAGE 192

Sheets worked with florals and other patterned fabrics to adorn the main living room, which, like most of the home, is filled with 18<sup>th</sup>- and 19<sup>th</sup>-century antiques. In the dining room, walls feature a hand-painted English chinoiserie design of birds (a favorite of the owner) and vines on a silver-leaf wallcovering, and early California and Impressionist oil paintings hang in focal areas of the home.

In addition to the interior transformation, Sheets shares a strong sense of enthusiasm for the new open-to-the-sky veranda off the living room. The outdoor space expands the living area and usability of the house, yet still feels intimate and contained, while framing views of the Pacific Ocean. But those advantages were hard-won. "Building that large vertical wall without a roof was one of the biggest



Wainscoting made from salvaged 100-year-old bricks sets off white clapboard siding on the house's exterior. A new pool, appointed with furnishings from Janus et Cie, was one of the changes made to the property.

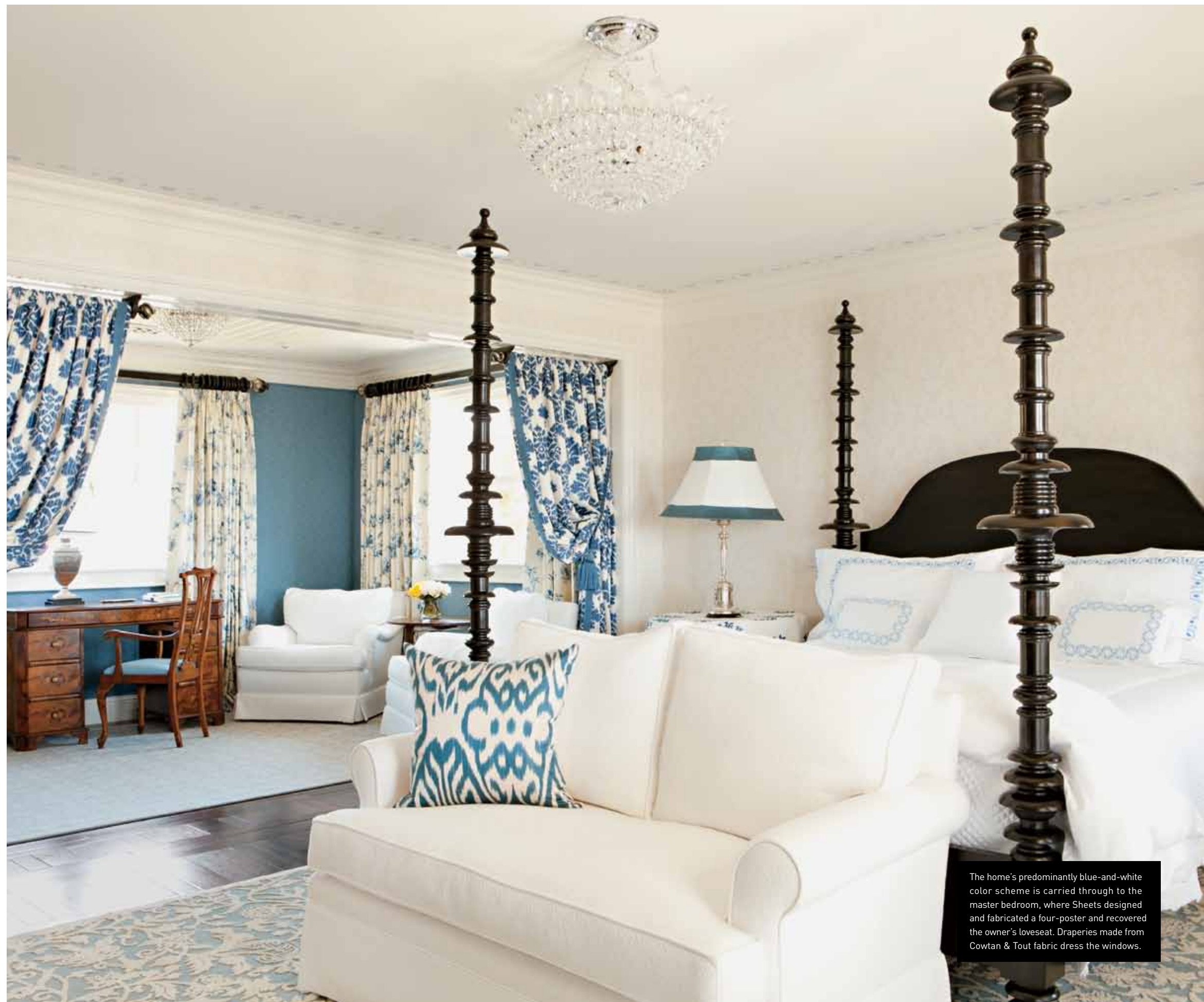


In the master bathroom, Sheets chose a Ralph Lauren Home fabric for the window shade and centered the client's own table in the airy room. Blue floral wallpaper by Thibaut brings a colorful touch to the space. The tub filler is from Sigma.

CONTINUED FROM PAGE 194

challenges we had," says builder Ryan Hill. "We had to tie it back to the foundation to offset wind during the construction and create rigid and moment frames to help the walls flex as needed, to allow for the windows."

After 14 months of construction, the overriding consensus from all involved is that the successful result is directly related to the mutual understanding of the design concept. "The detailing is an absolute treat, because we were able to follow this traditional East Coast look," Hayer says. "Warren has so much experience with the style, and the contractor executed everything perfectly." Apparently, the owner agrees. "She has many other houses that she normally travels to during the year," notes Sheets, "but this one is just what she wanted. She hasn't left for nine months." **L**



The home's predominantly blue-and-white color scheme is carried through to the master bedroom, where Sheets designed and fabricated a four-poster and recovered the owner's loveseat. Draperies made from Cowtan & Tout fabric dress the windows.